



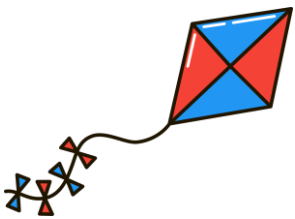
A large, empty rectangular box with a black border, intended for writing or drawing.

Two horizontal lines, one above and one below, defining a space for writing.



A large, empty rectangular box with a black border, intended for writing or drawing.

Two horizontal lines, one above and one below, defining a space for writing.



A large, empty rectangular box with a black border, intended for writing or drawing.

Two horizontal lines, one above and one below, defining a space for writing.